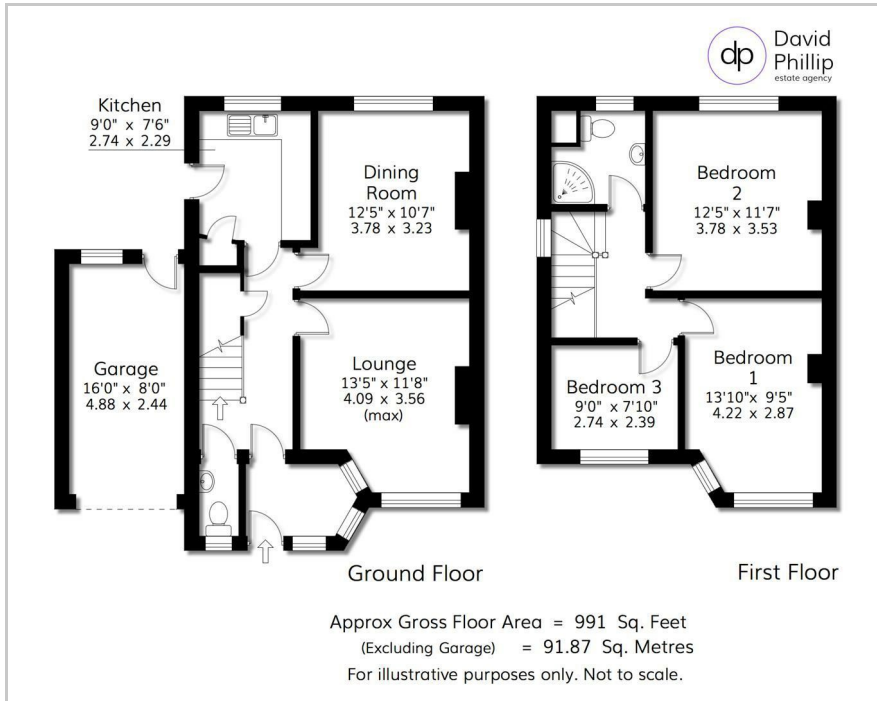




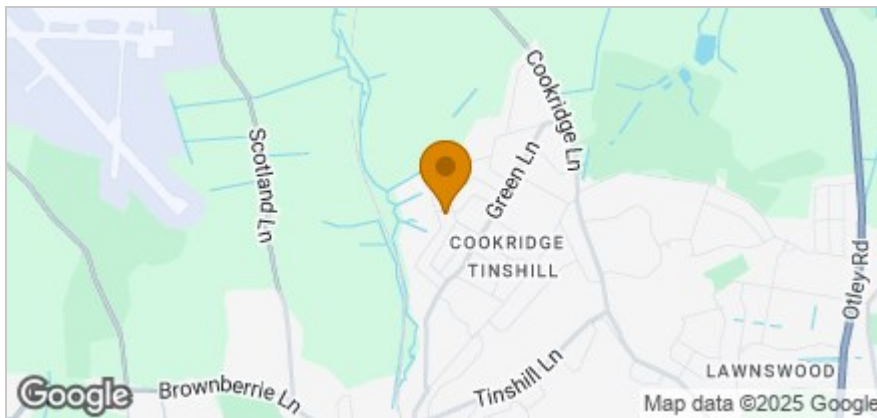
4 Moseley Wood Bank, Leeds, LS16 7HY

Guide Price £320,000

Floor Plan



Area Map



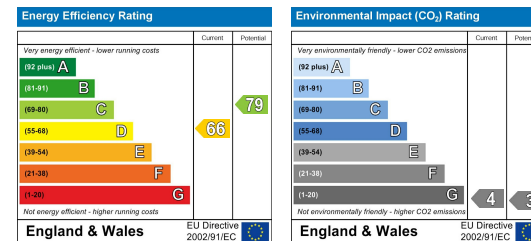
Accommodation

- No Onward Chain
- In Need of Modernisation
- Potential For Extension Subject to Planning Approval
- Popular Residential Location
- Energy Performance Certificate (EPC) TBC
- Freehold
- Leeds District Council Tax Band D
- Off Street Parking & Garage

Viewing

Please contact our David Phillip Estate Agents Office on 01134 676 400 if you wish to arrange a viewing appointment for this property or require further information.

Energy Efficiency Graph



These particulars, whilst believed to be accurate are set out as a general outline only for guidance and do not constitute any part of an offer or contract. Intending purchasers should not rely on them as statements of representation of fact, but must satisfy themselves by inspection or otherwise as to their accuracy. No person in this firm's employment has the authority to make or give any representation or warranty in respect of the property.